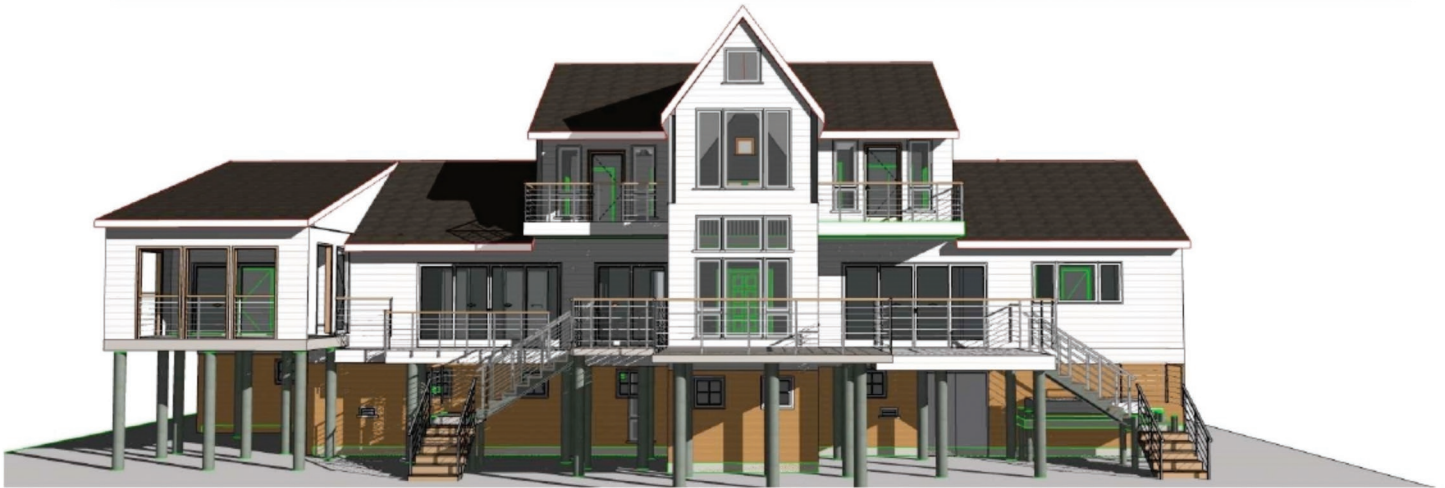


ARCHITECTURE IN 3D

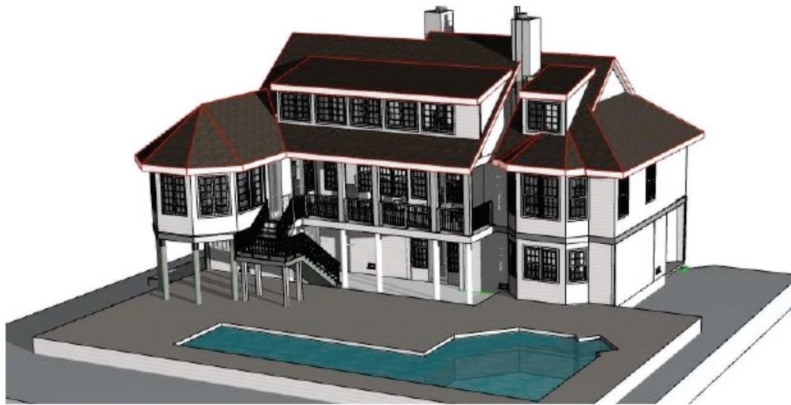


The essence of how a building will look is created and presented in a 3D model in the early stage of the design phase. This allows you to see your ideas come to life and make the changes and refinements early on to improve the curb appeal and maintain nice proportions and detailing on all sides. It makes all the difference.



Our 3 D model allows you to view your project from many view points, inside and out. This make understanding the space or spaces much easier at an early stage so together we can refine your vision. With greater involvement in the design you will have greater satisfaction with your finished project.

No longer is there a need to pay for expensive renderings as a 3-D model is generated as we design. Whether a single family home, addition, commercial building or renovation we utilize this tool that brings your project to life.



Our job is not only to craft your vision but to communicate with you clearly during the process. Trying to comprehend what the whole building looks like in two dimension (2-D) is difficult and time consuming. 3-D is how we view the world and it is now how you will visualize your project. We can see it from any corner or angles and make design changes and evaluate them with confidence early on. This gives you peace-of-mind that your project will meet your expectations.



Why We Use 3D

When we use 3D in the design process it helps us refine your decision process early on. Changes made at this phase is inexpensive as it is during the paper and model stage. When changes are made during the construction phase they are more expensive and delay the completion schedule.

Ready to get started?

<http://hharchnj.com/book-your-appointment/>